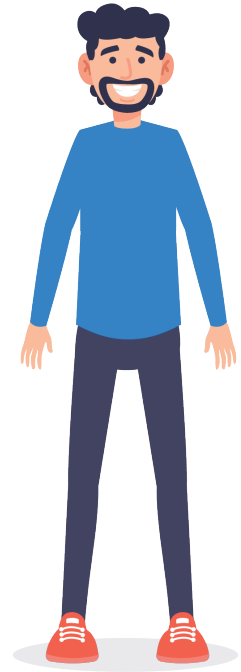


## Meet Rex.

Rex has had a period of his life in which he experienced homelessness. He suffers from poor physical and mental health symptoms, which have contributed to other problems going on in his life.

Through a collaborative community impact assessment - YOU- our community, told us safety net services was one of your greatest needs. At United Way of East Central Iowa (UWECI), we are addressing this need by focusing on safety net services.

Safety net services address basic needs such as food, shelter, transportation and mental health crisis services. It is meant to “catch” individuals as they fall on hard times and help bounce them back.



## WE SUPPORT OUR MOST VULNERABLE NEIGHBORS

**United Way of East Central Iowa (UWECI) is committed to addressing our community's greatest needs and creating systemic change.**

Together with our partners and stakeholders, we need you—our passionate, dedicated supporters—to inspire other Eastern Iowans VIA United Way.

**UWECI invests in programs like these to provide a safety net of services for individuals like Rex and others in our community:**

- Emergency shelter
- Eviction prevention
- Food insecurity
- Transportation
- Mental health crisis services

## Safety Net Services Stats



POVERTY RATE IS

**28%**

for black individuals in Linn county while the black population rate is only 6%



RECORD HIGH **448**

individuals reported experienced homelessness in Jan. 2021 by Linn County Continuum



NEARLY **70,000**

crisis line calls were received in 2021

## Unite to Inspire VIA United Way



**Volunteer**



**Invest**



**Advocate**

Because of support from people like you, people like Rex have the tools he needs to get back on his feet.

Learn more at [uweci.org/unitetoinpire](http://uweci.org/unitetoinpire)



United Way of East Central Iowa